



Valley Engineer Newsletter

December 2014 – January 2015

UPCOMING PROGRAMS

- January 29, Tour of Bosch Rexroth Corporation, Bethlehem, PA
- February 7, 2015 MATHCOUNTS®, Springhouse Middle School
- February 27, Engineer's Week Banquet
- March, Liability Insurance PDH Session
- April 12-14, PSPE 24 PDH Boot Camp East, Radisson Hotel, Valley Forge, PA
- June 7-9, PSPE 24 PDH Boot Camp West, Four Points Sheraton, Cranberry, PA
- September 24-25, State PSPE Conference, Four Points Sheraton, Cranberry, PA



**PENNSYLVANIA SOCIETY
OF
PROFESSIONAL ENGINEERS**

**LEHIGH VALLEY CHAPTER
(ORGANIZED 1935)**

President's Message

Kevin T. Campbell, PE, LEED AP

My thanks to the thirty-some members and guests who participated in our Holiday Dinner at the Buckeye Tavern on December 11. It was a great get-together not only for those of us "regulars", but also for the guests. The food was excellent, the libations were plentiful, and the setting was congenial. The decorations, the staff, and the general atmosphere of the Buckeye Tavern during the Holiday Season contributed to the general good spirit of the occasion.

Bryan Smith, RLA, ASLA, Chief Landscape Architect for Barry Isett & Associates had a presentation entitled "The Waterfront" which describes the next phase of Allentown's Renaissance. Al Gruenke has an article on the presentation later in this Newsletter.

Plans for MATHCOUNTS are progressing. Chris Williams has thirty volunteers, and could use another twenty. As a reminder it's being held at Springhouse Middle School this year. This is one of our signature events, so I urge anyone so inclined to contact Chris, at 610-398-0904.

Al Gruenke has volunteered for the Mentor Allentown Coalition, AmeriCorps VISTA, representing the Chapter. This is a program designed to introduce Middle School students in Allentown to Engineering. He had his first mentoring session at Raub Middle School on

Continued on page 2

January 8 and AI says it was very encouraging. There were 17 students attending. His topic was, "Who Wants to be an Engineer?", and laid out the steps one must take to become an engineer. The main theme was have a goal and work toward it. Naturally, AI was able to bring some of his overseas experiences into the presentation. One would not expect anything less from AI! An encouraging sign: one-third of the kids were girls!

I encourage anyone so inclined to volunteer to ensure a steady supply of Engineers for our future. The mentoring varies, from strictly motivational to helping with science fair projects. Contact Darryl Alexander at darryl@davincisciencecenter.org. Navigating the bureaucratic maze to become certified for working around children can be daunting, but certainly doable. The Chapter will reimburse anyone for any expenses involved.

Wishing that all of you had a good holiday season and a prosperous new year!

The Waterfront

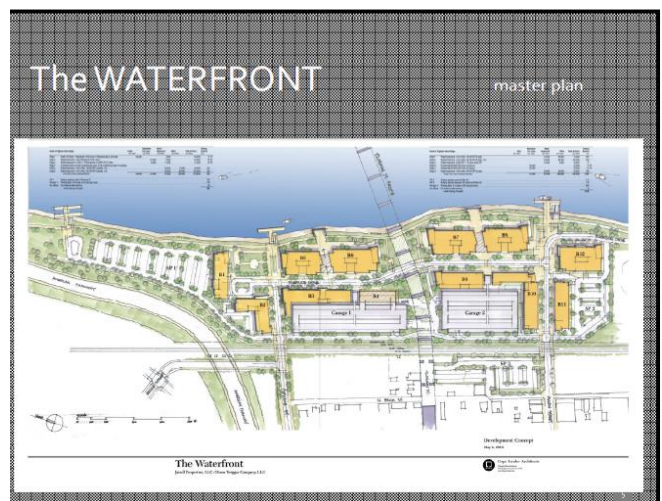
Members and guests of the Lehigh Valley Chapter, Pennsylvania Society of Professional Engineers were given a glimpse of the next phase of Allentown's renewal at our annual Holiday Dinner by Bryan Smith, RLA ASLA, of Barry Isett & Associates. The upcoming project, The Waterfront, is located along 2,800 feet of river frontage on the west side of the Lehigh River, approximately centered by the Tilghman Street Bridge.

The project is a continuation of Allentown's renewal, which started with the building of Coca-Cola Park and continued with the PPL Arena and other downtown buildings. The Waterfront coincides with the construction of the American Parkway Bridge over the Lehigh River, which will link the downtown to Airport Road and Route 22.



Artist's rendition of The Waterfront, looking south.

The Waterfront falls within the Neighborhood Improvement Zone, or "NIZ", which allows the development to provide valuable business incentives. The NIZ is overseen and managed by the Allentown Neighborhood Improvement Zone Development Authority (ANIZDA).



This portion of the NIZ encompasses 26 acres of what previously was primarily occupied by Lehigh Structural Steel. The site has been closed since 1992. In August 2012, a development group, Waterfront Redevelopment Partners, a partnership between Jaiindl Properties, LLC and Dunn Twigg Company acquired 26 acres of the site.

Continued on page 3

The primary access roads to Allentown will be Furnace Street to the North, and Allen Street to the south. The project will be composed of nine mixed use buildings with offices, retail, restaurants, residential, parking garages, an outdoor plaza, and an outdoor amphitheater. Access to the picturesque Lehigh River will, of course, be an important aspect.

The industrial heritage of the site will be incorporated in the project, with the beam crane and other elements from Lehigh Structural Steel remaining.

Some buildings are LEED certified, and attempts are being made to use as much recyclable material as possible. For example, all the old concrete will be crushed and reused.

Unfortunately, the old Neuweiler Brewery is not included in this project, though there has been some discussion regarding this Front Street eyesore.

We thank Bryan Smith RLA ASLA of Barry Isett & Associates to give us a view of Allentown's future, and the future looks bright

Growing old beats the alternative. Dying young only looks good in the movies.
-Regina Brett

BOOKSHELF: Life and Death of Inanimate Objects

By Dr. August Polinske, reviewed by Alfred Gruenke, PE

In a departure from previous practice, we are taking this portion of the Newsletter and devoting it to the review of a scientific work by the renowned Professor Emeritus of Metaphysical Relationships at the University

of Lower Wolhynia, Dr. August Polinske. This work should be required reading for anyone with time on their hands, either by choice or imposed, and has an intellectual bent. Many of us have had similar personal experiences, hence it will prove to be interesting and informative, especially in areas of limited contact with the outer world.

This masterfully researched and documented five-volume work is the culmination of a life time of research by Dr. Polinske. The references themselves cover 135 pages in six languages. In it, he tries to explain a phenomenon noticed by all of us, but usually discarded by our preprogrammed minds as impossible.

The question Dr. Polinske tries to answer is, do inanimate objects have the ability to reproduce and do they die?

Contrary to conventional thought, Dr. Polinske's answer is a resounding YES!

Consider this. You place a couple of pennies in the drawer of your desk or in an opaque jar and in a very short time the number of coins increase. So the question is, where do the new coins come from? Dr. Polinske quickly discarded the idea of division, alá amoebas, because the dates on the coins varied. Also, it was noted that one coin does not multiply. There must be at least two coins for this to occur.

Dr. Polinske tried a couple of techniques to observe this phenomena. Since the program had a rather low budget, even more so since the devaluation of the Wolhenian Zlapf, a couple of graduate students would sneak up to a drawer or jar, yank it open, and observe the proceedings. This had dismal results. There was an increase in the number of coins, but no one was caught "in the act".

Continued on page 17

SCHOLARSHIP SPONSORS

A great way to be involved in the LVPSPE Chapter is to contribute to the **LVPSPE SCHOLARSHIP FUND**. Please Contact the Valley Engineer Editor to sponsor scholarships for the remainder of the calendar year.

If you would like to contribute in any amount – please send your TAX DEDUCTIBLE donation to PA ENGINEERING FUND. Donations should be mailed to:

Kevin Campbell
c/o Barry Isett & Associates
85 South Route 100
Allentown, PA 18106

Please note "LVPSPE Scholarship Fund" on the comment line.

Or, you may contribute via the LVPSPE website <http://www.lvpspe.org/Donations>.

Scholarship application is at <http://www.lvpspe.org/Scholarships>. Any questions regarding scholarships can be directed to

Alex Dezubay, PE
610-597-2007
Scholarship@LVPSPE.org

PSPE SCHOLARSHIPS

The Pennsylvania Engineering Foundation currently administers the following scholarships for engineering students:

Undergraduate

- \$2,000 PEF Grant
- \$1,000 Harrisburg Chapter PSPE Grant
- \$1,000 Professional Engineers in Private Practice Grant

Upperclassman

- \$2,000 Pennsylvania Engineering Foundation Grant

Applications and guidelines are on-line now at <http://www.pspe.org/scholarships>

2013 – 2014 LVPSPE SCHOLARSHIP DONORS

Graduate

FLSmith Inc.
Bethlehem, PA
Lutron Electronics Co., Inc.
Coopersburg, PA
Viciaulic Company
Easton, PA
PPL
Allentown, PA

Senior

The Pidcock Company
Allentown, PA
Bridge Gap Engineering
Northampton, PA
Barry Isett & Associates
Allentown, Phoenixville, Hazleton and
Forty Fort, PA; Phillipsburg, NJ
Hanover Engineering Associates
Bethlehem, PA

Junior

Staffeld Engineering Services
Center Valley, PA
Peak Technical Staffing
Horsham, PA
DME Alliance
Allentown, PA
McTish, Kunkle & Associates
Allentown, PA
Newton Engineering
Allentown, PA
Kohn Engineering
Macungie, PA

Sophomore


Civil & Forensic Engineering
Bethlehem, PA
Monarch Precast Concrete Corporation
Allentown, PA
R. Peruzzi, Inc.
Bethlehem, PA
J.P. Mascaro & Sons
Audubon, PA
Keystone Consulting Engineers
Bethlehem, Wescosville, Kresgeville, PA

Freshman

William A. Erdman, PE
Alfred Gruenke, PE

Johann F. Szautner, D.I., P.E., P.L.S.

CIVIL & FORENSIC ENGINEERING



1775 Euclid Avenue
Bethlehem, PA 18018-2112

Phone: 610 216 3918
forensicengineerszautner@verizon.net



PRECAST CONCRETE CORPORATION

Paul L. Stein, Jr.

425 North Dauphin Street Phone: 610-435-6746
Allentown, Pa 18109-2199 Fax: 610-437-7133

 pstein@monarchprecast.com
www.monarchprecast.com

Engineering firm of choice since 1972



www.KeystoneConsultingEngineers.com

Three Regional Locations

East Office
Bethlehem, PA
610-865-4555

West Office
Wescosville, PA
610-395-0971

North Office
Kresgeville, PA
610-681-5233



McTish, Kunkel & Associates
Consulting Engineers & Surveyors

Site Planning & Design
Land Surveying
Transportation Engineering
Structural Engineering
Environmental Permitting
Municipal Engineering
Construction Inspection

3500 Winchester Rd., Suite 300
Allentown, PA 18104
610.841.2700
email: info@mctish.com



STAFFELD ENGINEERING SERVICES

Staffeld Engineering Services (SES) provides business and engineering consulting services, primarily to chemical and manufacturing companies.

We develop and implement economical solutions for a wide range of manufacturing and technical issues. SES offers the following services:

- Process Troubleshooting
- Process Improvements
- Equipment Specifications
- Modeling & Optimization
- Project Economics
- Technical Training Services

Scan the QR code below to visit our website (www.staffeld.com) for more information.



STAFFELD ENGINEERING SERVICES
Post Office Box 241
Center Valley, PA 18034-0241

www.staffeld.com
1-855-STAFFELD
peter@staffeld.com

Hanover

Engineering Associates Inc

Civil, Municipal & Planning, Structural, Surveying, Environmental, Transportation, Utility Line Permitting

Bethlehem Office
 252 Brodhead Road, Suite 100, Bethlehem, PA 18017-8944
 610.691.5644 • Fax 610.691.6968
www.hanovereng.com

Providing customized, timely service and one-on-one, personal attention to our clients in a variety of Environmental and Engineering Services:

• Municipal & Planning	• Stormwater Management
• Land Development	• Traffic/Transportation
• Structural	• Lake Management
• Surveying	• Watershed Management
• Wetland Consulting	• Onlot Sewage
• Wastewater	• Soils Investigation
• Water Supply	• Geology
• CAD/GIS/GPS	• Hydrogeology

Proudly serving our Clients and Communities for over 40 years with additional Offices located in Allentown, Lancaster, Elizabethtown, Poconos, Towanda, Wellsboro, and New Castle in PA, and Canton Ohio



BARRY ISETT & ASSOCIATES

Multidiscipline Engineers & Consultants
www.barryisett.com

Civil | Land Planning & Development | Survey | Code Review
 Structural | Mechanical | Electrical | Plumbing | Facilities Services
 Construction Services | Waste & Waste Water | Municipal
 Landscape Architecture | Parks & Planning | Grants | Forensics
 Environmental | Traffic Planning | Geological Services

Allentown • Phoenixville • Hazleton PA
Philipsburg, NJ

**In proud support of the LV PSPE
 Scholarship Program**



newton
 ENGINEERING

TRAFFIC, SURVEYING AND DEVELOPMENT PROFESSIONALS

TRAFFIC, TRANSPORTATION & HIGHWAY
 - Highway Occupancy Permits
 - Highway and Driveway Design
 - Traffic Counts, Analysis & Projections
 - Traffic Impact Studies

LAND DEVELOPMENT & SUBDIVISION
 - Subdivision Layout and Design
 - Land Development Engineering
 - Sketch and Concept Plans

PRECISION SURVEY
 - Boundary Surveys
 - Topographic Surveys
 - Construction Stake-Out
 - As-Built Plans

PROFESSIONAL, CPESC & CPSWQ CERTIFIED
 - Professional Civil Engineers
 - Professional Surveyors
 - Professional Traffic Operation Engineers
 - Certified Stormwater Quality Professionals
 - Certified Erosion & Sedimentation Professionals

- Tomorrow's Engineering Solutions Today -



www.newtonengineering.us
 Suite 212, Zack Building
 6235 Hamilton Blvd. Allentown, PA 18106
 (p) 610-366-0060 (f) 610-366-7818
 (e) info@newtonengineering.us

PROUD MEMBERS OF: 



Minuteman Press
 Design • Print • Copy • Posters • EDDM
 Mailing Services • Promo Products • Post Office

BLUEPRINTS
 New Service! **\$1.50** D Size Prints

ALLENTOWN
 1801 West Tilghman Street
 Allentown, PA 18104
 484.223.3311
 M-F 8am-6pm Sat 8am-2pm

BETHLEHEM
 123 East Broad Street
 Bethlehem, PA 18018
 610.865.9946
 M-F 7:30am-5:30pm

EASTON
 661 South 25th Street
 Easton, PA 18045
 610.923.9266
 M-F 8am-6pm Sat 8am-2pm

DESALES UNIVERSITY
 2755 Station Ave
 Center Valley, PA 18034
 610.282.1100 x1201
 M-Th 9am-5pm Sat 9am-4pm

WWW.MMPLV.COM

 **UNITED STATES POSTAL SERVICE** **FULL SERVICE CONTRACT UNITS**

NOW AT OUR ALLENTOWN & EASTON STORES

William A. Erdman, PE

Alfred Gruenke, PE

THE PIDCOCK COMPANY

CIVIL ENGINEERING
LAND PLANNING
ARCHITECTURE
LAND SURVEYING

FOUNDED 1924

Oxford Drive at Fish Hatchery Road
2451 Parkwood Drive
Allentown, Pennsylvania
18103-9608

TELEPHONE: 610-791-2252
TELEFACSIMILE: 610-791-1256
EMAIL: info@pidcockcompany.com
WEBSITE: www.pidcockcompany.com



**KOHN
ENGINEERING**

FIRE PROTECTION CONSULTING

Donald J. Kohn, P.E.
Principal

4220 Mountain Road
Macungie, PA 18062

KohnEngineering@ptd.net www.KohnEngineering.com

Phone 610-967-4766 Fax: 610-967-6468

*Bridging the World
through Relationships of Trust*



Bridge Gap Engineering is an agile and highly responsive engineering company lead by a uniquely diverse team of trusted cement and minerals industry experts. Based on service, solutions and relationships, Bridge Gap Engineering is a learning organization focused on knowing our customers and their changing needs in the 21st Century. Our experience spans decades and our knowledge spans multiple industries encompassing plant design, process design, and plant maintenance and operations.

Local Presence
GLOBAL REACH

Peter Paone, PE
Chief Operating Officer
Emissions and Pyroprocessing Technology Specialist

Bridge Gap Engineering, LLC
1717 Main Street
Northampton, PA 18067 USA
www.bridgegapengineering.com

Mobile: +1 (610) 597-2381
Office: +1 (215) 325-1303
Fax: +1 (215) 525-2736
Peter.Paone@bridgegapengineering.com



PEAK TECHNICAL STAFFING USA
Engineering Talent. Guaranteed.

Rob Cleland
VICE PRESIDENT - NORTHEAST REGION

215.586.3600 866.234.PEAK (7325) cel 267.221.2038
robcleland@peaktechnical.com www.peaktechnical.com
601 DRESHER ROAD, SUITE 250, HORSHAM, PA 19044



R. Peruzzi Inc
Electrical Engineering Consultant

Robert Peruzzi, PhD, PE
President

P: 610 462 3939
E: peruzzi@rperuzzi.com
W: www.rperuzzi.com

719 Fourth Avenue
Bethlehem, PA 18018

Behavioral Modeling and Verification for RF
Analog and Mixed-Signal IC and SOC Design



Develop Your Career with Us

“I’ve been a part of Lutron for 3 1/2 years.”

Jamie McMahon (Electrical Engineering Major)
Design and Development Engineer

At Lutron, we’ve been designing and manufacturing energy-saving light control solutions since 1961.

Our success depends on your success. Join Lutron’s Innovation Leadership Program and you’ll develop the skills and knowledge needed to win in the world of innovation.

- Immediately join an engineering development team
- Receive formal mentor support
- Collaborate regularly with business unit managers and directors
- Acquire real-world experience through field assignments
- Foster relationships with Lutron’s global customers

Key opportunities include:

- Engineering**—Electrical, Mechanical, Computer, Software, Manufacturing, Industrial, Architectural
- Science**—Physics, Chemistry, Math

Opportunities are also available in sales leadership and field engineering leadership—**hiring all majors.**



To learn more about how you can be a part of our future visit

www.lutron.com/careers



▲ Dynamic keypad in Black



©2012 Lutron Electronics Co., Inc. | PN 368-2717 REV/B

COUPLING INNOVATION WITH CONFIDENCE



Since 1919, Victaulic has been the world's leading producer of pipe joining solutions. Our products are used in the most recognizable landmarks, from the Hoover Dam to Egypt's Alexandria Library, making bold designs possible.

Backed by 1,800+ patents, Victaulic is committed to our customers' needs, providing solutions for your design challenges. We draw it, train on it and certify the installation, all while utilizing best-in-class technology. From concept through construction, we ensure your project runs efficiently as possible.

Engineering Solutions:

- Construction Piping Services (CPS) helps reduce risk and increase reliability for a smoother project experience.
- BIM Software keeps communication and collaboration in sync.
- Propriety truck loading software saves time and confusion on the job with phased product schematics.

victaulic.com



VICTAULIC IS A REGISTERED TRADEMARK OF VICTAULIC COMPANY.
© 2014 VICTAULIC COMPANY. ALL RIGHTS RESERVED.



Local roots, global reach

Headquartered in the Lehigh Valley, PPL has become one of the largest companies in the U.S. utility business. The PPL family of companies serves more than 10 million customers in the U.S., England and Wales, and is known for an enduring commitment to customer service, environmental responsibility, and exemplary corporate citizenship.

It's our legacy of excellence.

www.pplweb.com



Proud to Honor our Engineers in the Lehigh Valley & Around the Globe



Engineering is what we do at FLSmidth. As a world leader in providing equipment and services to the cement and minerals industries, our success begins with our engineers who plan and design the systems and equipment for which our customers rely.

2040 Avenue C · Bethlehem, PA 18017 · www.flsmidth.com

Internet Addresses

National Society of Professional Engineers

www.NSPE.org

Pennsylvania Society of Professional Engineers

www.PSPE.org

Lehigh Valley Chapter – PSPE

www.LVPSPE.org

2013 – 2014 State Officers

State Director

Angelika Forndran, PE
StateDirector@LVPSPE.org
215-536-7075

Alt. State Director

Mike Basta PE
AltStateDirector@LVPSPE.org
610-767-1617

VP Northeast:

Vacant

Board of Direction Meetings

The monthly Board of Direction meetings are 6:00 PM on the second (2nd) Monday of each month. Open to all members; they are held at the office of Barry Isett & Associates, 85 South Route 100, Allentown, PA.

2013–2014 Chapter Officers

President:

Kevin Campbell, PE
President@LVPSPE.org 610-398-0904

Vice President:

Alfred Gruenke, PE
VicePresident@LVPSPE.org 610-395-6561

Secretary:

Chris Williams, PE
Secretary@LVPSPE.org 610-398-0904

Treasurer:

Ray Szczucki, PE
Treasurer@LVPSPE.org 610-614-1245

Immediate Past President:

Peter Staffeld, PhD, PE, F.NSPE
PastPresident@LVPSPE.org 484-264-7885

Chapter Directors:

Don Kohn, PE
Directors@LVPSPE.org 610-967-4766

Nicole Gasda, PE
Directors@LVPSPE.org

Al Dezubay, PE
Directors@LVPSPE.org 610-597-2007

LEHIGH VALLEY CHAPTER 2014 MATHCOUNTS CONTRIBUTORS

ADVANTAGE
ENGINEERS
your engineering advantage



Providing timely, professional, cost effective
Design & Construction Phase Geotechnical Services
for over 1,300 projects and counting.

6520 Stonegate Drive, #110
Allentown, PA 18106 • (610) 366-7120

*Serving the Mid-Atlantic Region from 5 offices in
Pennsylvania, Maryland, and New Jersey*
www.advantageengineers.com

Engineering firm of choice since 1972

KCE
KEYSTONE
CONSULTING
ENGINEERS

Three Regional Locations

East Office
Bethlehem, PA
610-865-4555

West Office
Wescosville, PA
610-395-0971

North Office
Kresgeville, PA
610-681-5233

www.KeystoneConsultingEngineers.com



THE MORNING CALL

LEHIGH VALLEY | 610.398.0904
VALLEY FORGE | 610.935.2175
NORTHERN PA | 570.455.2999
NEW JERSEY | 908.454.9500

Integrity Ownership Trust

Thank you BIA Staff Members for making
Barry Isett & Associates one of the
Lehigh Valley's Top Workplaces



BARRY ISETT & ASSOCIATES

Multidiscipline Engineers & Consultants

Civil | Land Planning & Development | Survey | Code Review
Structural | Mechanical | Electrical | Plumbing | Facilities Services
Construction Services | Water & Waste Water | Municipal
Landscape Architecture | Parks & Planning | Grants | Forensics
Environmental | Traffic Planning | Geological Services

www.barryisett.com

MONARCH
PRECAST CONCRETE CORPORATION

Paul L. Stein, Jr.

425 North Dauphin Street
Allentown, Pa 18109-2199

Phone: 610-435-6746
Fax: 610-437-7133

pstein@monarchprecast.com



www.monarchprecast.com



Engineers, environmental consultants, surveyors, site designers, and safety advisors committed to sustainable development and resource conservation.

Charles Myers
 Director of Energy & Environmental Services
 cmyers@rettew.com
 610-866-8330

1-800-738-8395

www.rettew.com |   

RETTEW
 We answer to you.

PENNSYLVANIA

Athens • Lancaster • Lehigh Valley
 Mechanicsburg • Pittsburgh
 Schuylkill Haven • Williamsport

Angelika Forndran, PE

Hanover

Engineering Associates Inc

Civil, Municipal & Planning, Structural, Surveying, Environmental, Transportation, Utility Line Permitting

252 Brodhead Road, Suite 100, Bethlehem, PA 18017
 610.691.5644 • Fax 610.691.6968

www.hanovereng.com

Additional Offices located in Allentown, Poconos, Lancaster-Lebanon, Elizabethtown, Towanda, Wellsboro, and New Castle in Pennsylvania, and Canton Ohio

Enhancing the Quality of Life

Our work enhances the quality of life for our clients, our employees, and the people touched by our work. It touches this generation and future generations. We celebrate the earth everyday with our approach to operations and the application of green solutions and sustainable designs. Always using our minds. **Always thinking ahead.**

Engineering and Environmental Services

- Facility and Site Engineering
- Municipal Engineering and Planning
- Site Assessments and Brownfield Services
- Land and Building Survey and Data Capture
- Water and Wastewater Engineering
- Architectural Engineering
- Water Resources




READING | LEHIGH VALLEY | HARRISBURG | YORK



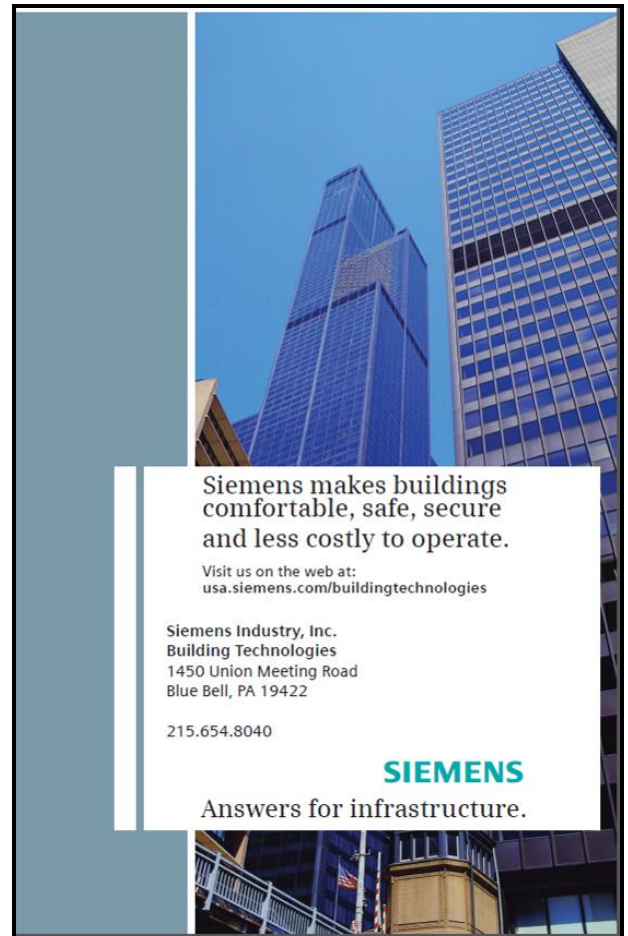
PENNONI ASSOCIATES INC.
CONSULTING ENGINEERS

PROVIDING ENGINEERING SERVICES SINCE 1966

- Construction Services
- Energy & Sustainability
- Environmental
- Geotechnical
- Laboratory Testing
- Landscape Architecture
- Materials Testing & Inspection
- MEP
- Municipal Planning
- Site Design
- Structural
- Survey & Geomatics
- Transportation
- Water/Wastewater



2041 Avenue C, Suite 100, Bethlehem, PA 18017
610-231-0600 | www.pennoni.com



Siemens makes buildings comfortable, safe, secure and less costly to operate.

Visit us on the web at:
usa.siemens.com/buildingtechnologies

Siemens Industry, Inc.
Building Technologies
1450 Union Meeting Road
Blue Bell, PA 19422

215.654.8040

SIEMENS
Answers for infrastructure.

Lehigh Engineering Associates

Lock Ridge Engineering

It should be noted that Dr. Polinske traveled to dozens of countries around the world in his research. He observed that only the lowest value items have this prodigious propensity for procreation. It's almost as if they are saying, "I may not be worth much, but what I lack in value I make up with numbers." Higher value items are not affected.

Though not supported by empirical evidence, the keen mind of Dr. Polinske has formed conclusions to explain what is occurring. Simply put, coins, (and other low-value objects such as metal coat hangers and cheap buttons) have the ability to reproduce. This happens only in the dark, away from prying eyes. Somehow, by means of another yet-to-be-explained phenomena, they "know" when being observed.

At the other end of the birth-to-death continuum, Dr. Polinske noted the dark side of the death of inanimate objects. Cannibalism, of one sock, by its twin.

The good doctor observed what many of us experience every day. The disappearance of socks. Socks come in pairs (twins), yet only one disappears. Has anyone ever found a sock previously "lost"? The answer is, of course, no. Dr. Polinske has clear evidence that one sock is eaten by its twin, for reasons unknown. Only twins of socks are eaten. A single sock, who has already consumed its twin, is never consumed by its peers. It survives virtually forever, until its owner, despaired over the loss of its twin, tosses it out.

The eating of one sock by another may occur suddenly, leading to one sock's disappearance, or slowly, as evidenced by holes appearing in a sock. Haven't you ever wondered what happens to the material which had been in a hole, if not consumed? What other conclusions can one draw?

Through elaborate experiments and observation, the site of this carnage has been identified. It is the Laundry Basket! In the warm, cozy atmosphere of soiled clothing, the primeval urges emerge. No pair of socks placed in a drawer ever disappears, and the washing machine is too "busy" for serious mischief. Only the laundry basket remains.

It should be noted that that esteemed publication "The Wall Street Journal" recently had an article trying to explain the missing sock mystery, but came to the wrong conclusion. The Journal blamed it on the clothes dryer, but did not provide empirical or entomological evidence! Quite obviously this otherwise fine publication cannot escape the bonds of tradition.

Dr. Polinske is more than a great scientist; he also offers solutions for the conundrum of missing socks, totally appropriate for the Holiday gift-giving season. The good doctor recommends giving three matching socks, or even four, instead of the traditional two. He realizes that this may not stop the cannibalism but will certainly reduce the psychological trauma to the owner caused by the missing sock.

Dr. Polinske does us all a great service identifying beliefs that have placed our minds in a straight jacket, unable or unwilling to address issues outside our "comfort zone." This monumental work of scientific achievement will go a long way to releasing us from these bonds. We thank him for these efforts.

 Lord grant me the strength to accept the things I cannot change, the courage to change the things I can and the friends to post my bail when I finally snap!
 -Anonymous



Lehigh Valley Chapter
Pennsylvania Society of Professional Engineers
Lehigh, Northampton, Monroe and Carbon Counties



Minutes for the January 19, 2015 BOARD OF DIRECTORS MEETING
6:00 pm at the Office of Barry Isett & Assoc. 85 South Route 100, Allentown, PA

Attendees: Kevin Campbell, Al Gruenke, Peter Staffeld, Don Kohn, Angelika Forndran, Al Dezubay, Brian Kutz, Mike Basta, Ray Szczucki and Chris Williams.

Call to Order: Kevin Campbell called the meeting to order at 5:57 PM

President – Kevin Campbell

- Roles & Responsibilities:
 - Programs – Kevin
 - Valley Engineer – Al Gruenke
 - Scholarship – Al Dezubay
 - Student Chapters – Peter Staffeld
 - MATHCOUNTS Coordinator – Kevin Campbell
 - Membership – open

Programs

- January – Bosch Rexroth on January 29th at 5:30pm
- February – Engineer’s Week Banquet on February 27th.
 - Need to determine EOY and YEOY. Nominations due January 31st.
 - Chapter should submit an article for LVBJ.
 - All were in agreement that the Chapter should place an ad in the LVBJ at approximate cost of \$500.
- March – Professional liability insurance PDH session. Date to be determined.

MATHCOUNTS

- Date is Feb 7th, to be held at Springhouse Middle School. Snow date Feb 8th.
- Peter will run the Countdown Round.
- Scoring room will be in the auxiliary gym.
- Need to set up tables and chairs on morning of the event. Setup to begin at 7am. Chris will request volunteers to assist with this.
- Judges from prior years are still on board.
- Minuteman Press donating the programs. Dorney Park donating tickets. Nestle donated water.
- Tote bag giveaway item.
- Parking shouldn’t be a problem. Might need some signage.

Valley Engineer & Scholarship Fundraising – Al Gruenke

- Al will coordinate with Kevin for next VE issue.
- Anticipating 11K in donations, need to follow up with some outstanding.

Treasurer – Ray Szczucki

- Ray reviewed current account balances.
- We should set up a debit card to use for online payments, including Chapter website fees.
- Peter transferred \$3,000 from Chapter PayPal account into checking.
- We should change signatory list to include Al Gruenke and remove Peter Staffeld at some point in the future.

State Director – Angelika Forndran

- Board meeting coming up on Saturday, January 24th. Constitution changes to be voted on. One proposed change regarding electronic voting.
- Peter mentioned the fiscal year change is taking place now with a six month FY.
- Industrial exemption still being lobbied by state. Hasn't been put up for a vote by legislature yet.
- Mike will be installed as NE VP in place of Joe McCarthy.
- State Conference on September 24-26th in Cranberry Twp. (north of Pittsburgh).

Past President – Peter Staffeld

- Brian Kutz had previously expressed interest regarding involvement. Hasn't received any other requests from members interested in a position.
- Peter to nominate the following candidates:
 - Past President – Kevin Campbell
 - President – Al Gruenke
 - Vice President – Brian Kutz
 - Secretary – Chris Williams
 - Treasurer – Ray Szczucki
- Alternate state director position is vacant since Mike is moving to NE Regional VP. Mike won't be able to vote on behalf of the Chapter as a regional VP.
- All agreed we would designate someone to represent the Chapter as needed.

Old Business/ New Business

- Al Dezubay has been coordinating with local school districts to make sure applications are submitted for scholarships. Chapter website has been updated with past winners.
- Al Gruenke is looking for more volunteers for the mentoring program through the DaVinci Science Center. He recently gave a presentation at Raub Middle School focused on getting kids interested in engineering.

Adjournment at 7:12 PM on a motion by Kevin, seconded by Mike. All were in favor.